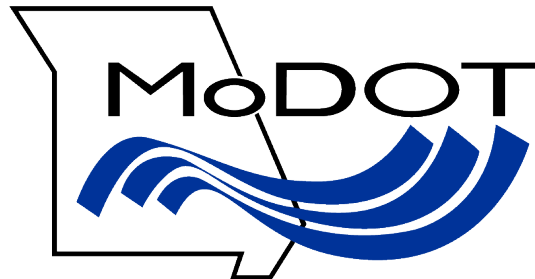


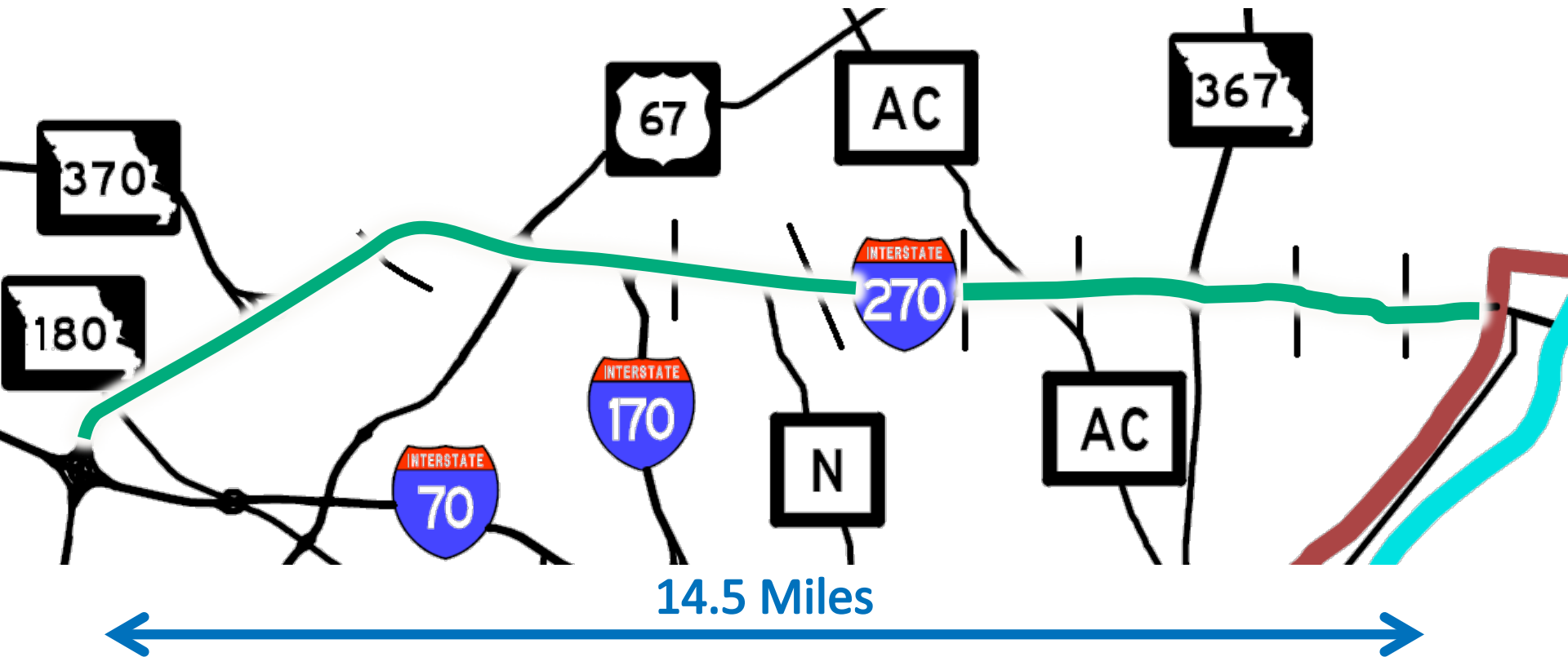


I-270 North Design-Build Project

Community Information Group
Thursday, March 12, 2020



Project Location



Project Needs

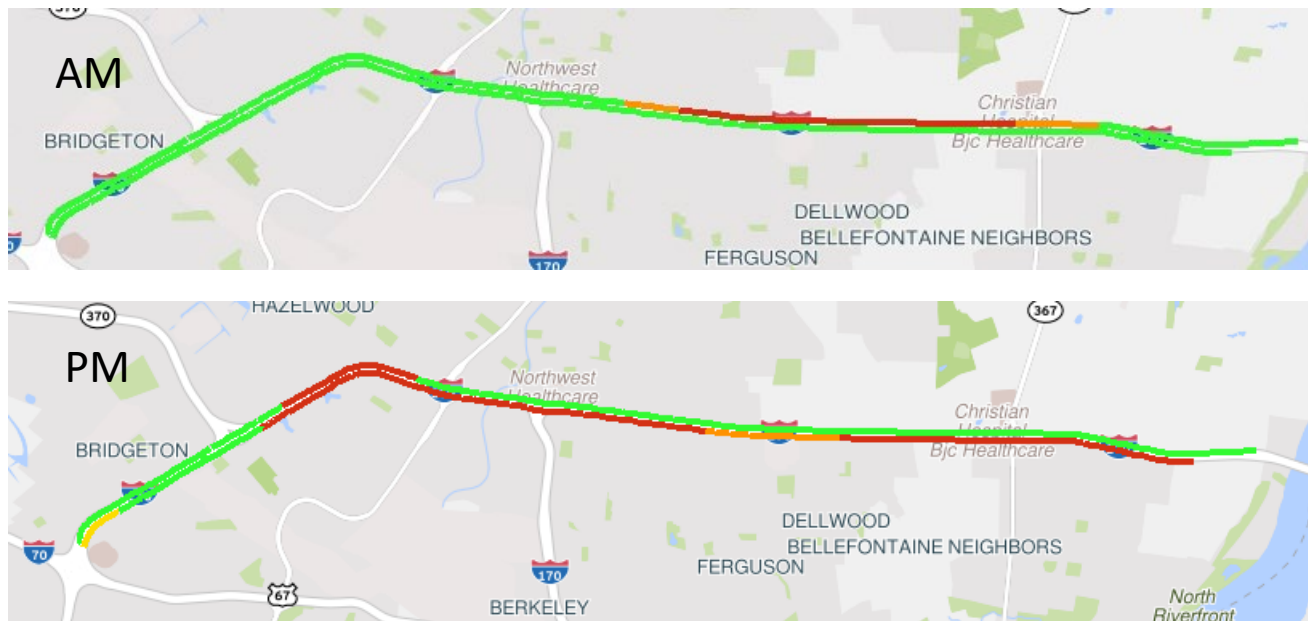
- Improve condition of existing infrastructure

Poor Mainline I-270 Bridges	AADT All (Trucks)
Coldwater Creek	125k (22k)
Rte N	140k (25k)
Rte AC	110k (30k)



Project Needs

- Maximize reliability and roadway improvements on I-270 corridor



Project Needs

- Eastbound
 - 30% higher than statewide rate
 - 4 High Severity 2-mile segments
- Westbound
 - Approximately the statewide rate
 - 4 High Severity 2-mile segments



I-270 EB & WB Crashes from 2013-2017

Fatal	Serious Injury	Total
20	76	3,361



Project Needs

- Increase access for non-motorized users through and across the corridor

Pedestrian Crashes from 2013-2017

Fatal	5
Serious Injury	3
Minor Injury	3
PDO	0
Total	11



Project Goals

1. Deliver the Project by December 1, 2023 within the program budget of \$278 million.
2. Maximize reliability and safety while linking communities for all users.
3. Provide a durable and maintainable transportation network making Interstate 270 the conduit for a prosperous region.
4. Grow and utilize a diverse workforce.
5. Minimize and mitigate impacts to customers through innovation.

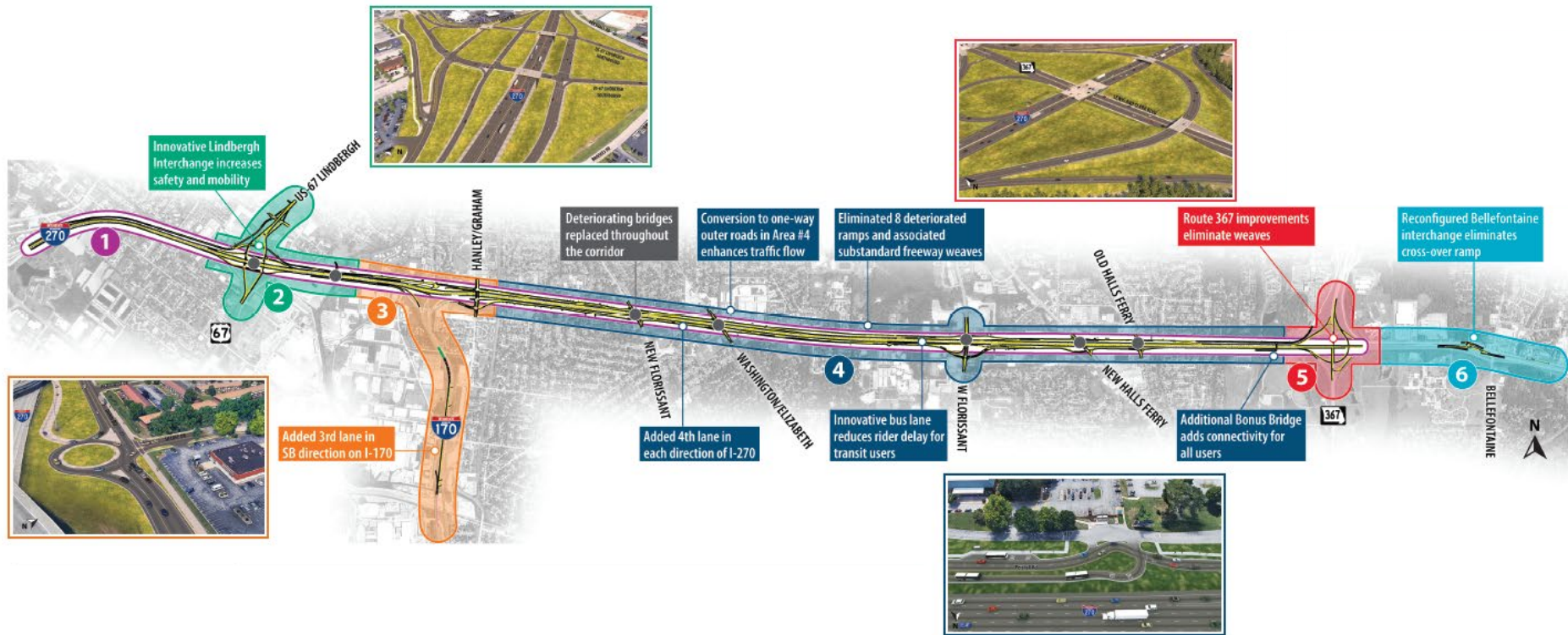


Budget and Schedule

- Program Budget: \$278 million
 - Includes: Engineering, Stipend, ROW, Utilities
- Design-Build Contract Amount: \$246 million
 - Fixed Price/Best Value



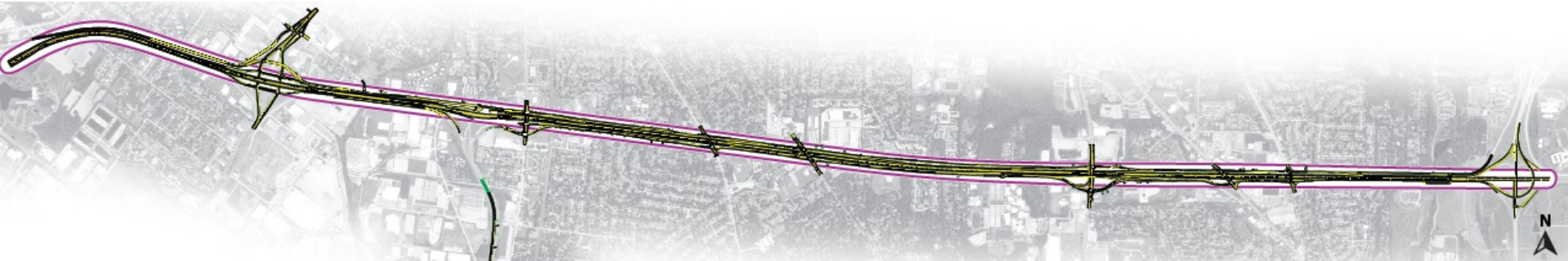
I-270 North Design Build Project



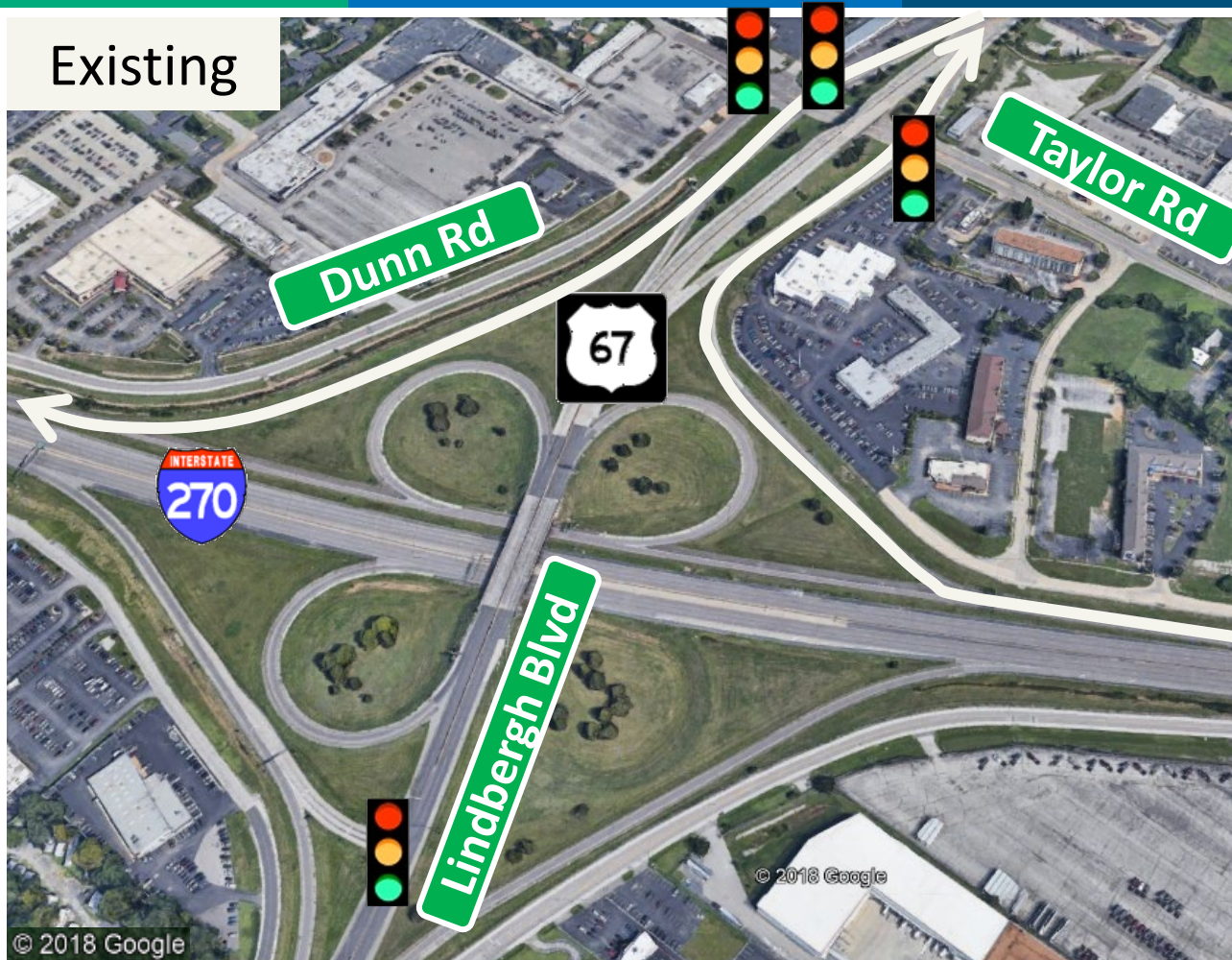
Geometrics – Segment 1

I-270 Mainline

- Additional Lane - Lindbergh to 367



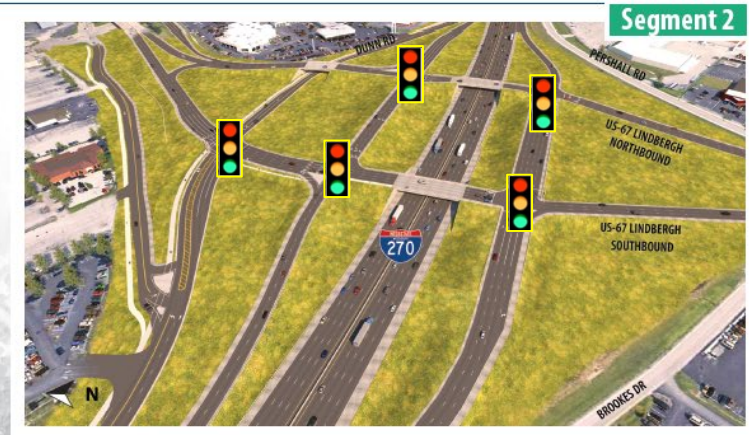
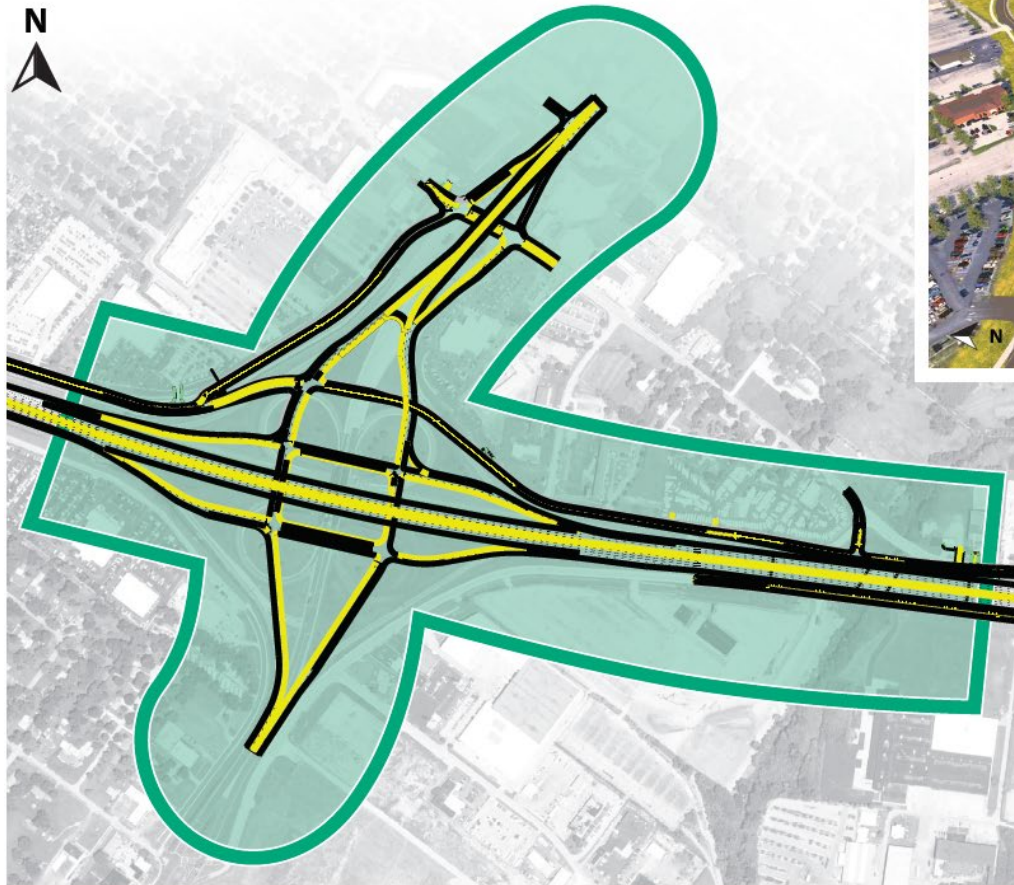
Lindbergh Interchange



Geometrics – Segment 2

Lindbergh Boulevard

Figure 4a.20 - Segment 2



- Split Lindbergh NB & SB
- Eliminate all loop ramps and short weaves
- Tie WB off-ramp directly to Lindbergh
- Connect Dunn Rd across Lindbergh

Interstate 170



Hanley/Graham



Geometrics – Segment 3

I-170 & Hanley/Graham

Figure 4a.22 - Segment 3



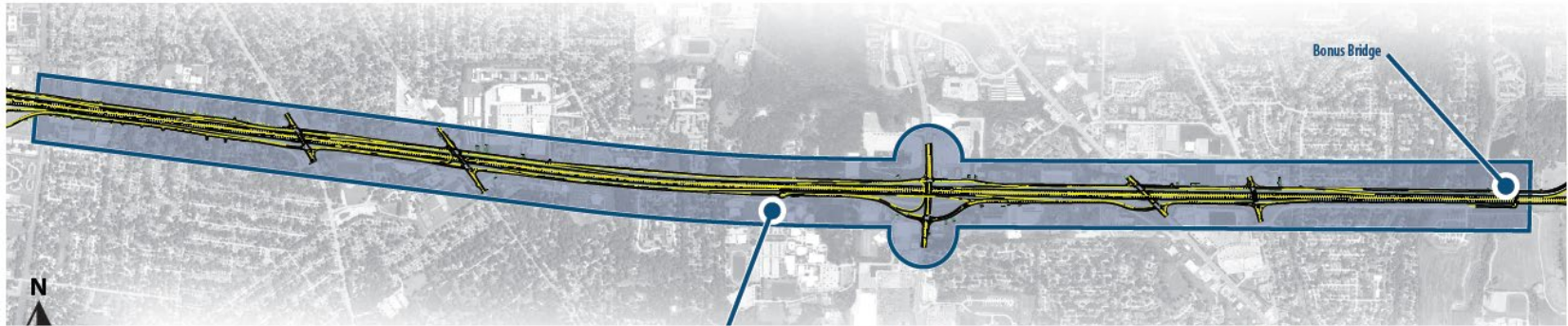
- Convert WB crossover slip ramp to roundabout
- Widen SB I-170 to 3 lanes

Geometrics – Segment 4

Hanley/Graham to Old Halls Ferry

Figure 4a.24 - Segment 4 (Blue Zone)

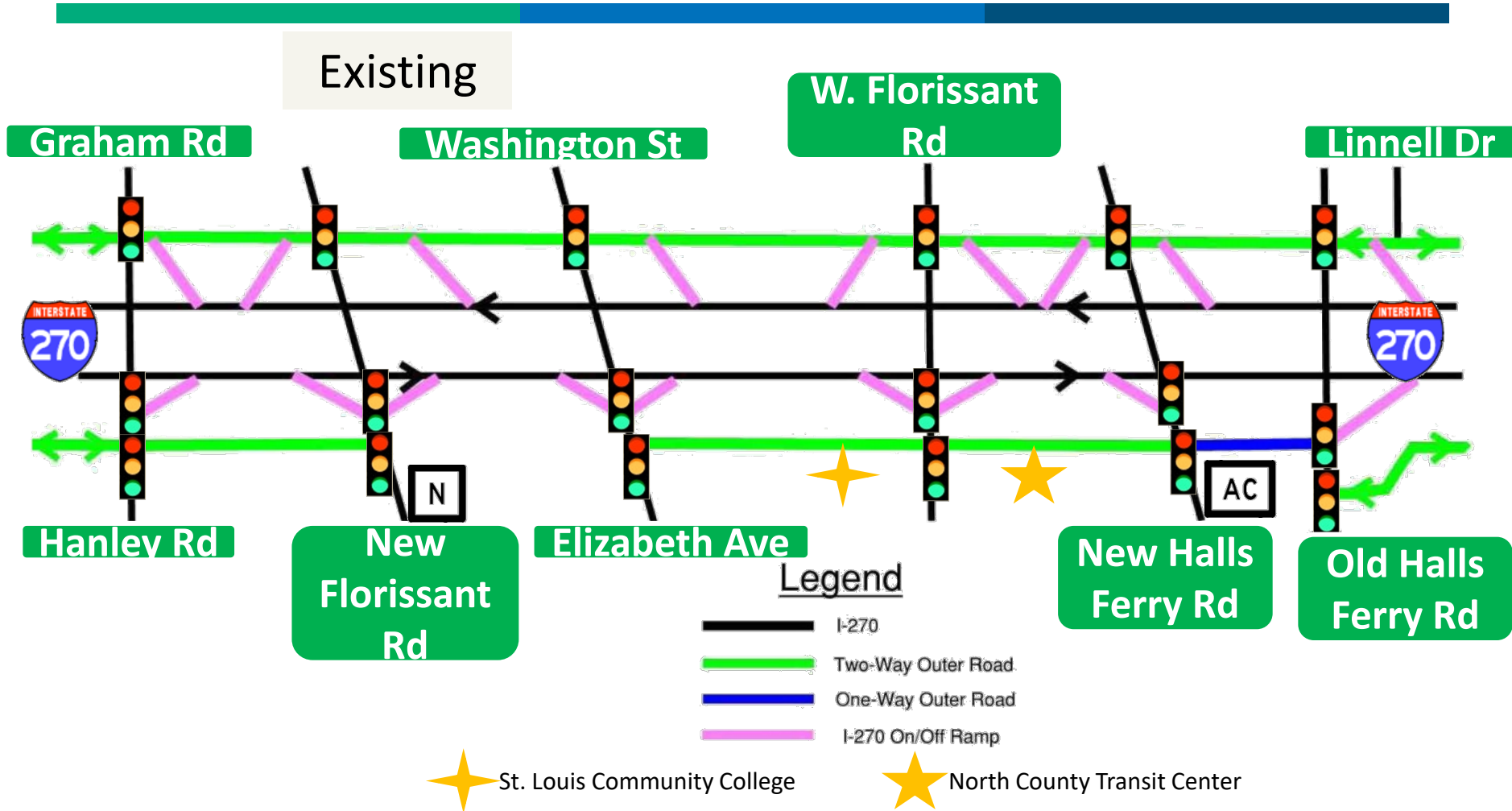
Segment 4 (Blue Zone)



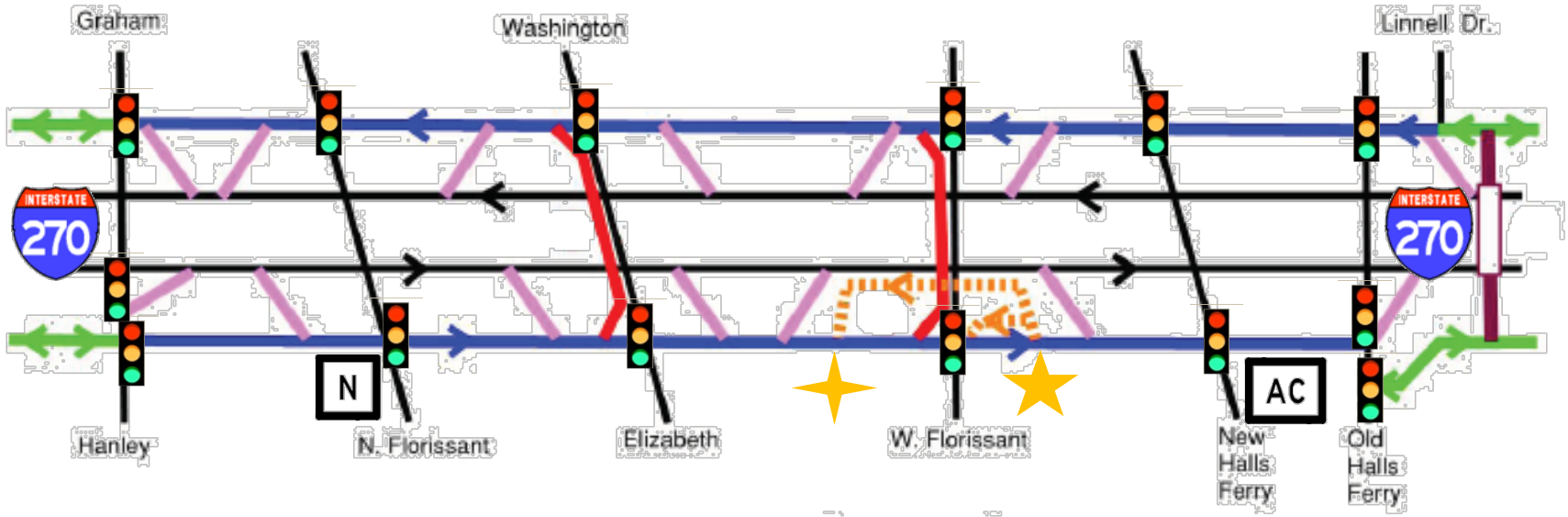
- Convert Dunn and Pershall to continuous one-way outer roads
- Eliminate all crossover slip ramps
- Provide U-turns at Washington/Elizabeth and West Florissant
- Split diamond between New Halls Ferry and Old Halls Ferry
- Bridge Pershall Road over I-270 west of Route 367
- Relocate or consolidate ramps to improve ramp spacing



Interchanges and Outer Roads




Interchanges and Outer Roads



Legend

-  I-270
-  Two-Way Outer Road
-  One-Way Outer Road
-  I-270 On/Off Ramp
-  Outer Road U-Turn
-  Exclusive One-Way Bus Lane

 St. Louis Community College

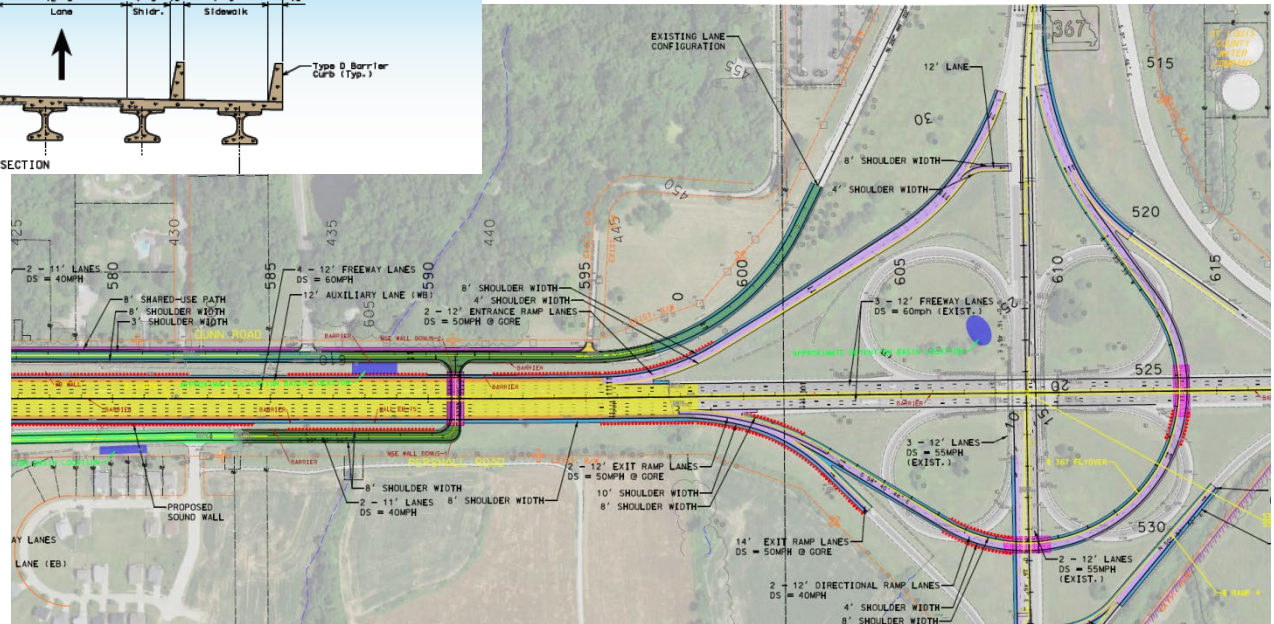
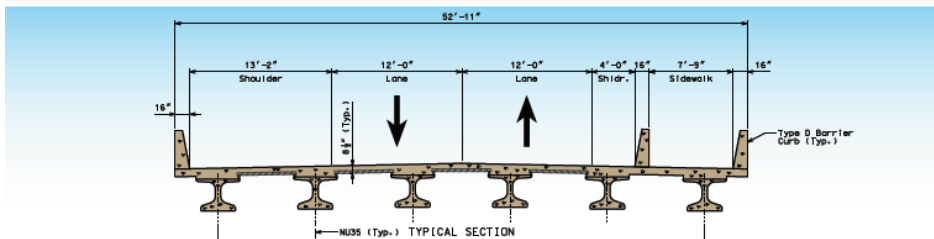
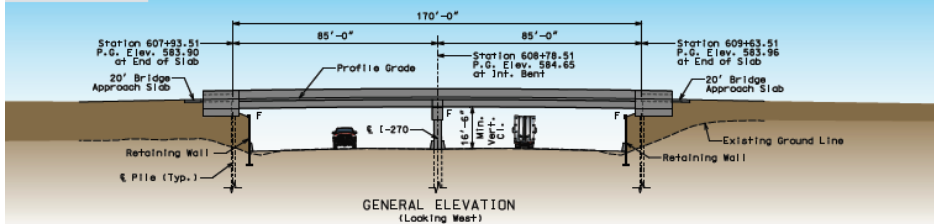
 North County Transit Center



Pershall over I-270

New Bridge

BONUS BRIDGE OVER I-270



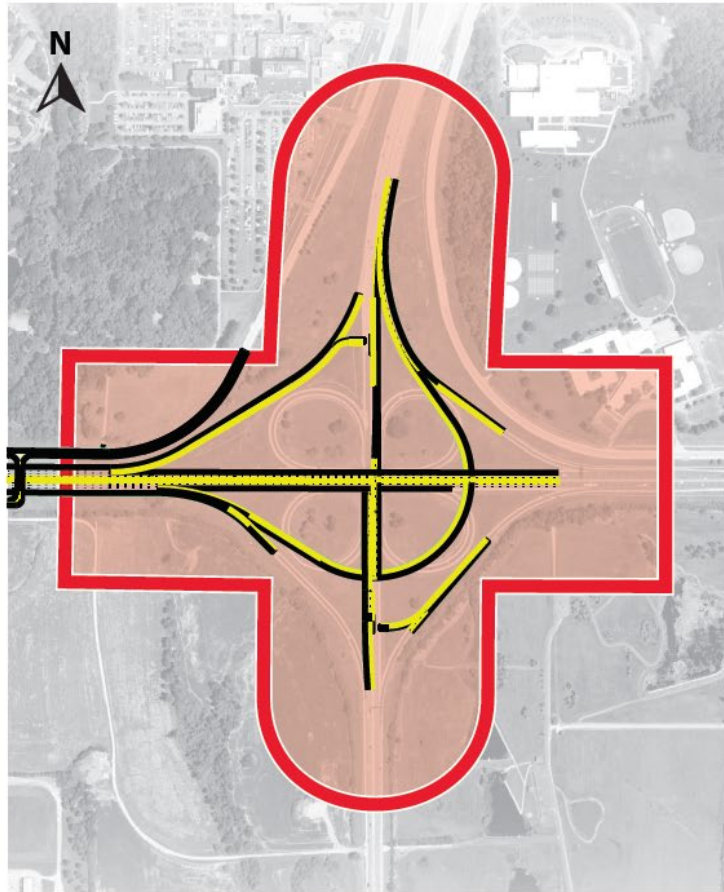
367 Interchange



Geometrics – Segment 5

Route 367 Interchange

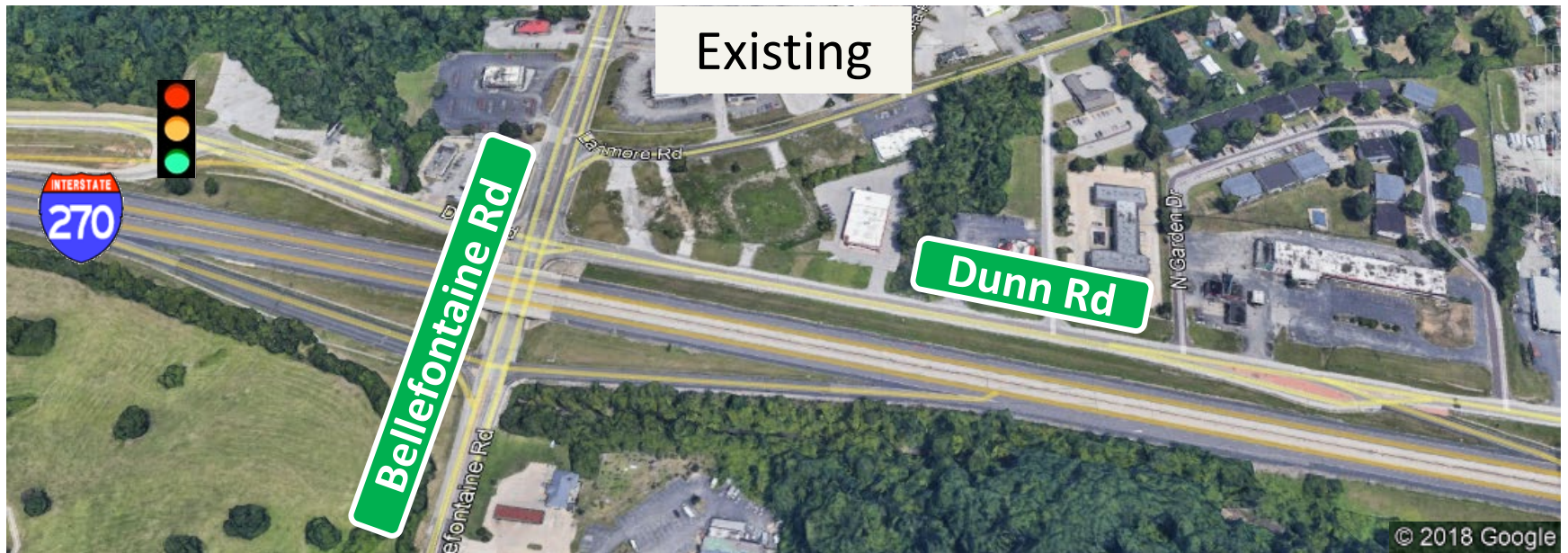
Figure 4a.26 - Segment 5



Segment 5

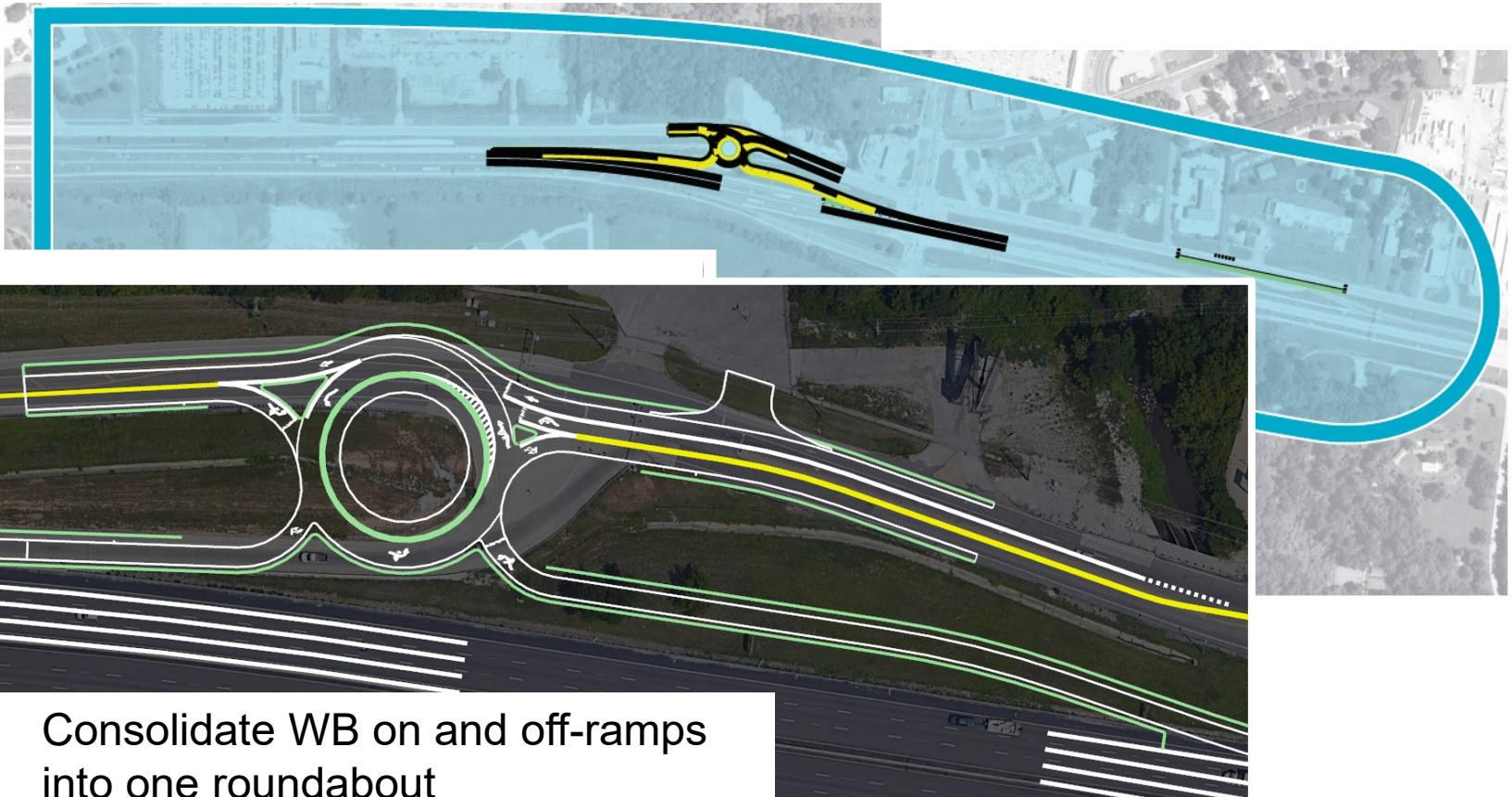
- 2-Lane EB to NB direct connection
- 2-Lane WB on-ramp
- Eliminate 3 loop ramps and all short weaves
- Green-T intersection at ramp terminals

Bellefontaine



Geometrics – Segment 6

Bellefontaine Road Interchange



- Consolidate WB on and off-ramps into one roundabout
- Eliminate crossover slip ramp



Safety Improvement Plan

Freeway



Outer Road



Safety Improvements

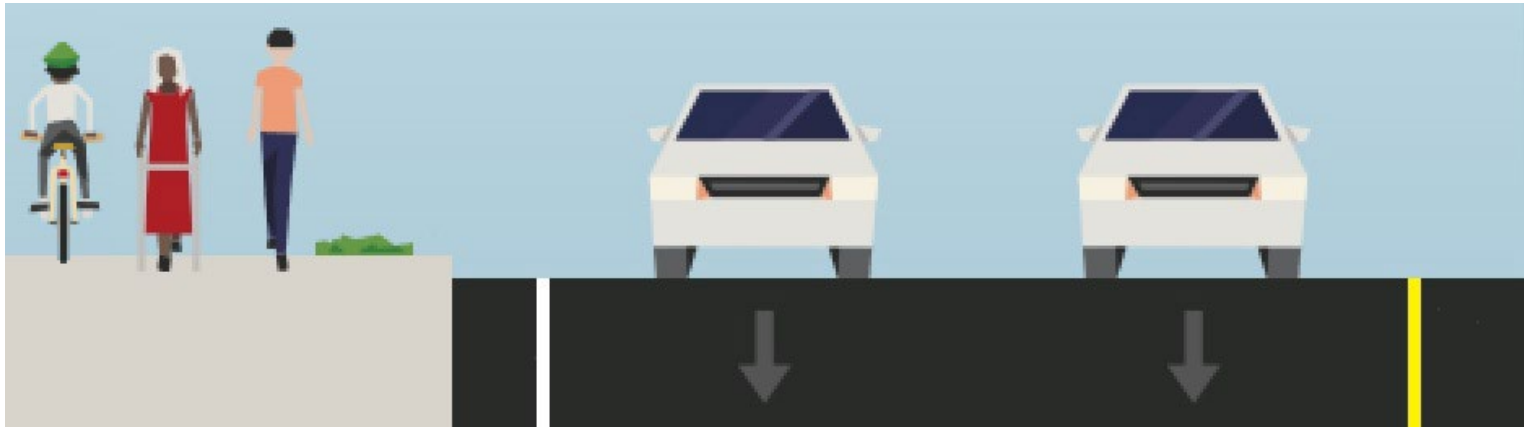
- Reduce congestion
 - added lane on I-270 and southbound I-170
- 12-foot outside shoulders along I-270
- Consolidate/remove ramps
 - Remove 8 total ramps and 6 of 7 loop ramps
- Eliminate all unsignalized cross-over ramps
 - one-way outer roads & roundabouts
- Intersection Upgrades
 - Retro-reflective backplates on signals
 - Systematic signing/striping at unsignalized intersections



Bicycle and Pedestrian Plan



Bicycle and Pedestrian Plan

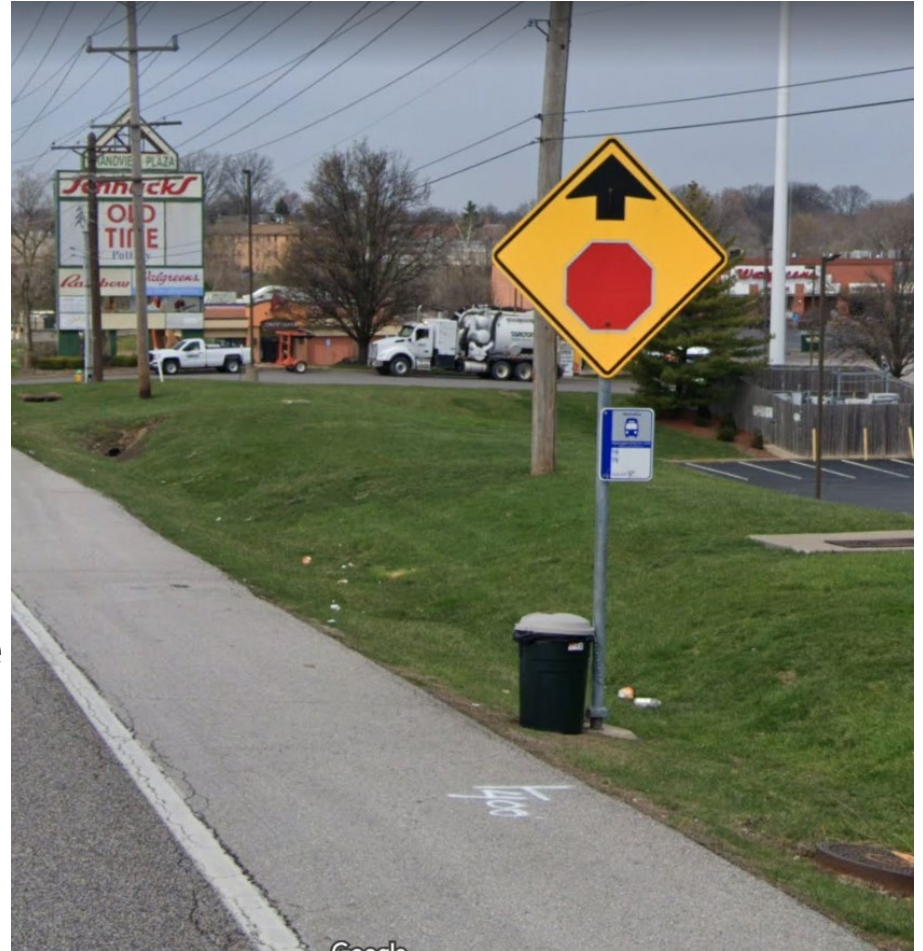


- Dunn – Lindbergh to Breezy Point (6 miles)
- Pershall – Hanley/Graham to Old Halls Ferry (4 miles)

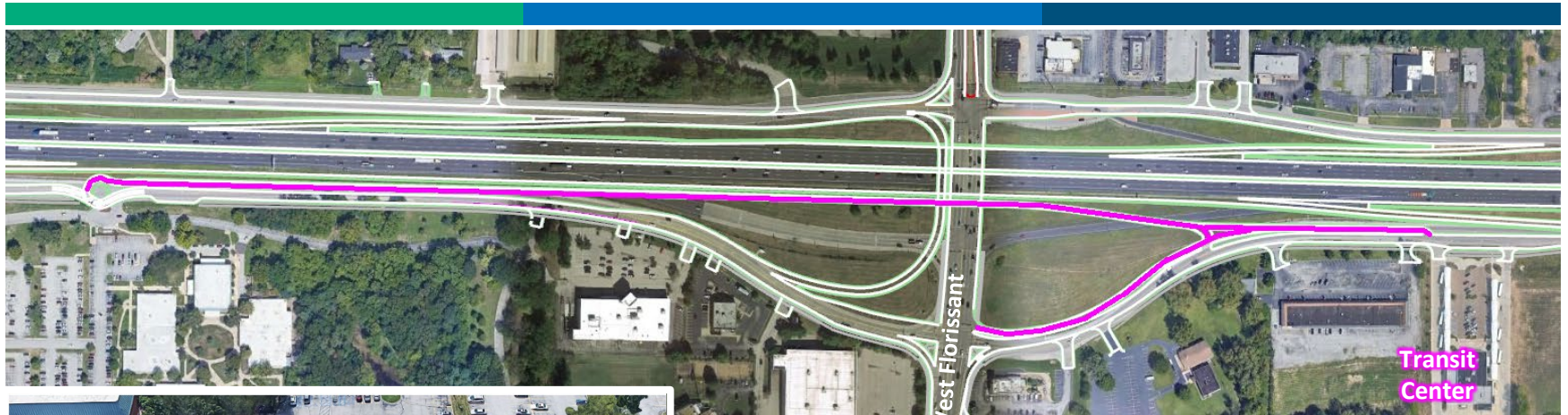


Transit Improvements

- Bus stops off of roadway shoulders
- One-way outer roads and multi-use path provide ability to add bus stops
- Counter-flow bus lane
- Transit signal priority



Counter-flow Bus Lane



- Eliminates adverse travel & reduces travel time for transit passengers
- MoDOT worked with Metro to accommodate bus routes



Highlights

Location	Plan
Lindbergh Interchange	Split Diamond
Additional Lane	Rte 67 to Rte 367
Hanley/Graham WB On-ramp	Roundabout
367 Interchange	2-lane direct connection
Interchanges Improved	9
Bike/Ped	10 miles Multi-use Path
Bridges	12 Replacements, 7 New
Signal Replacement	18 Intersections
Outer Roads	Convert to one-way Remove all cross-over slip ramps



2020 Detours Schedule

Location	Closure Timeframe	Closure Duration
I-270 EB off-ramp to Washington/Elizabeth	April 2020	1.5 years
I-270 EB on-ramp from New Florissant	June 2020	3 months
Old Halls Ferry over I-270	June 2020	4 months
NB Lindbergh to WB I-270 loop ramp	July 2020	2 years
Washington/Elizabeth over I-270	Aug/Sept 2020	3 months
I-270 EB on-ramp from Old Halls Ferry	Sept 2020	2 weeks
Pershall & Elizabeth Intersection *	Nov 2020	3 weeks
Dunn & Elizabeth Intersection *	Nov 2020	3 weeks

* Pershall & Elizabeth and Dunn & Elizabeth Intersections will not be closed at the same time.

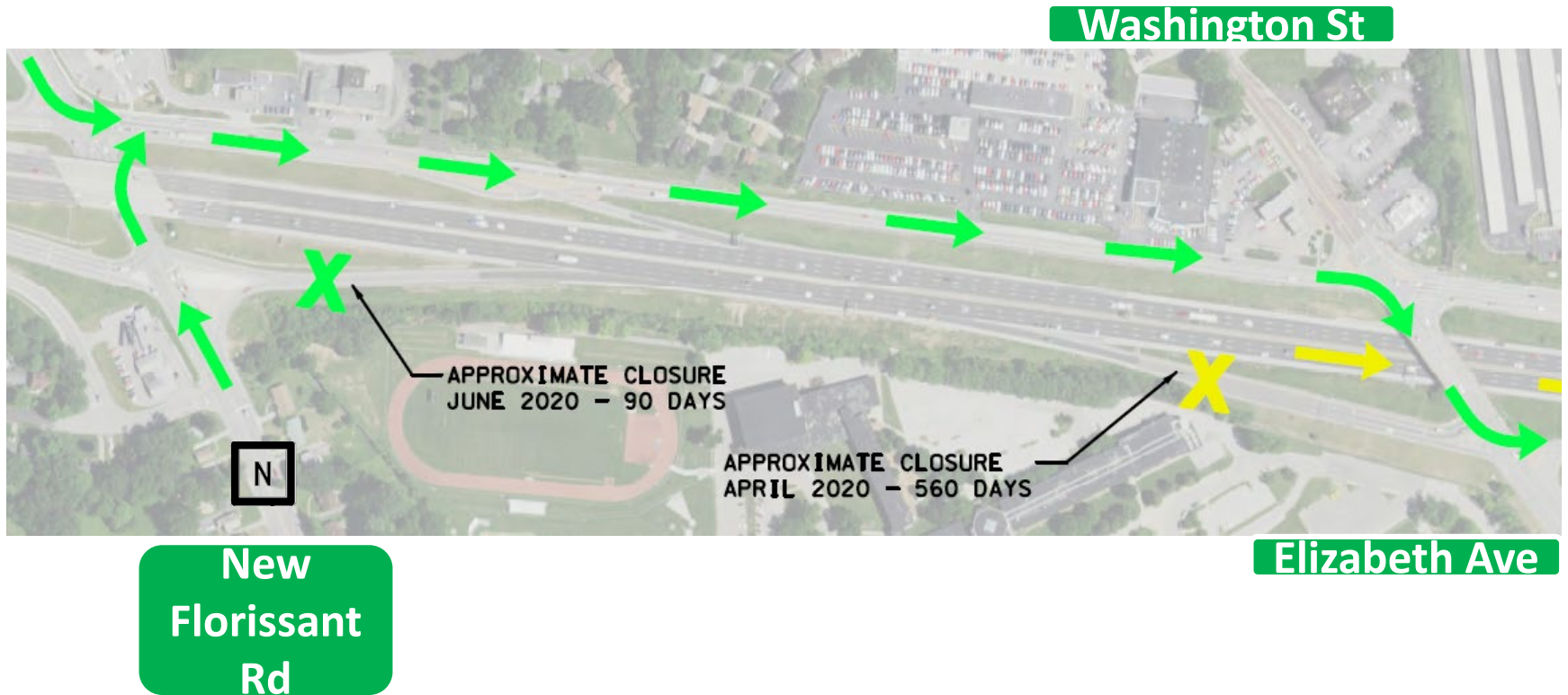


Upcoming Construction Schedule

Location	Tentative Start
SB I-170	Summer 2020
Bellefontaine	Summer 2020
Route 367	Spring 2021
I-270 Widening	Winter 2020-2021
West Florissant	Winter 2020-2021
New Halls Ferry	Spring 2022
New Florissant	Summer 2022

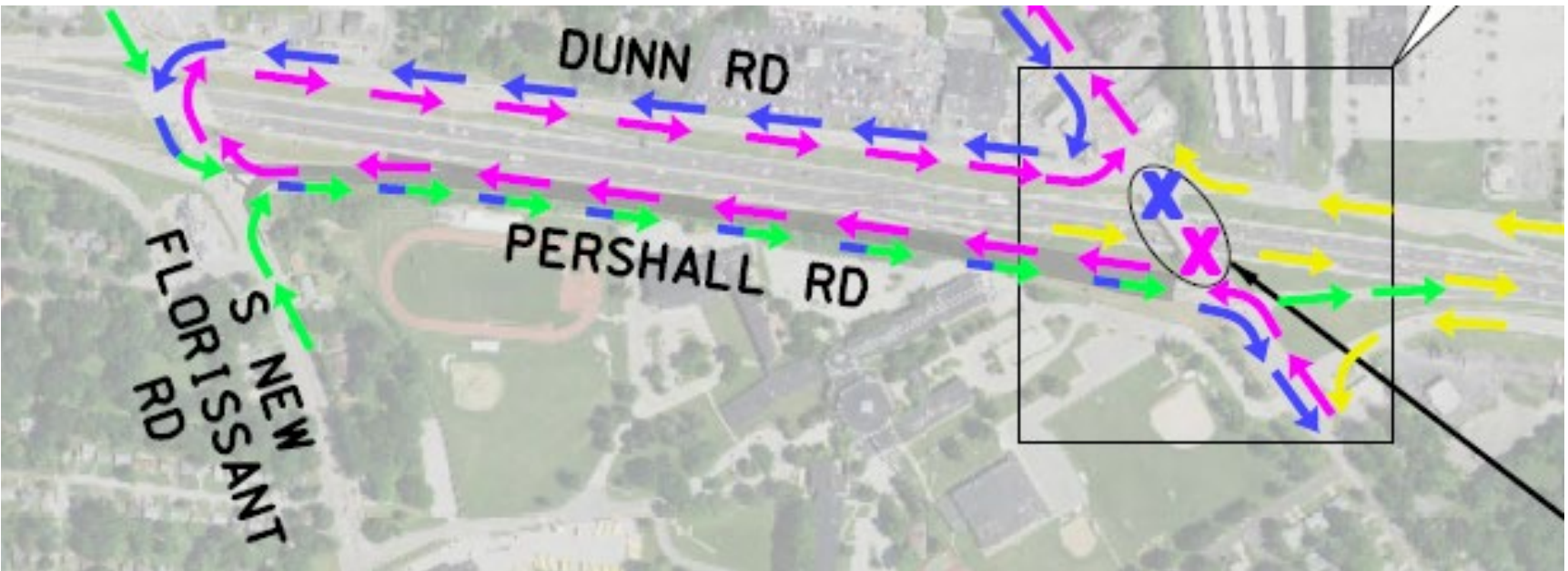


EB Ramps Closures near Washington/Elizabeth



Washington/Elizabeth Closure

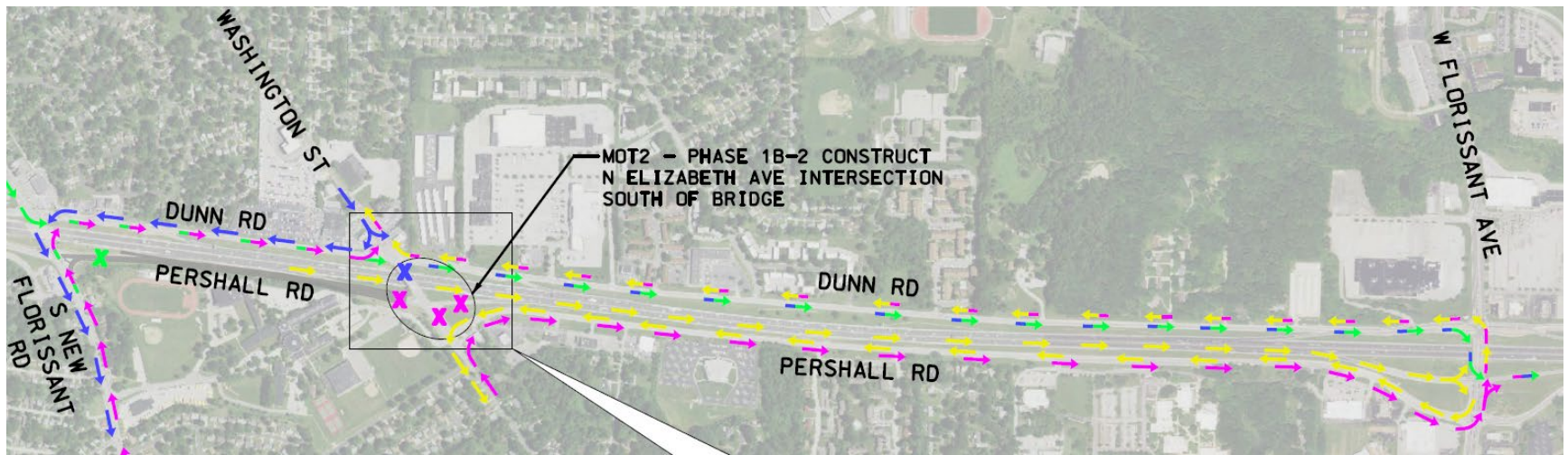
Approximate Closure
3 Months Aug/Sep 2020



Elizabeth Ave



Pershall and Elizabeth Closure



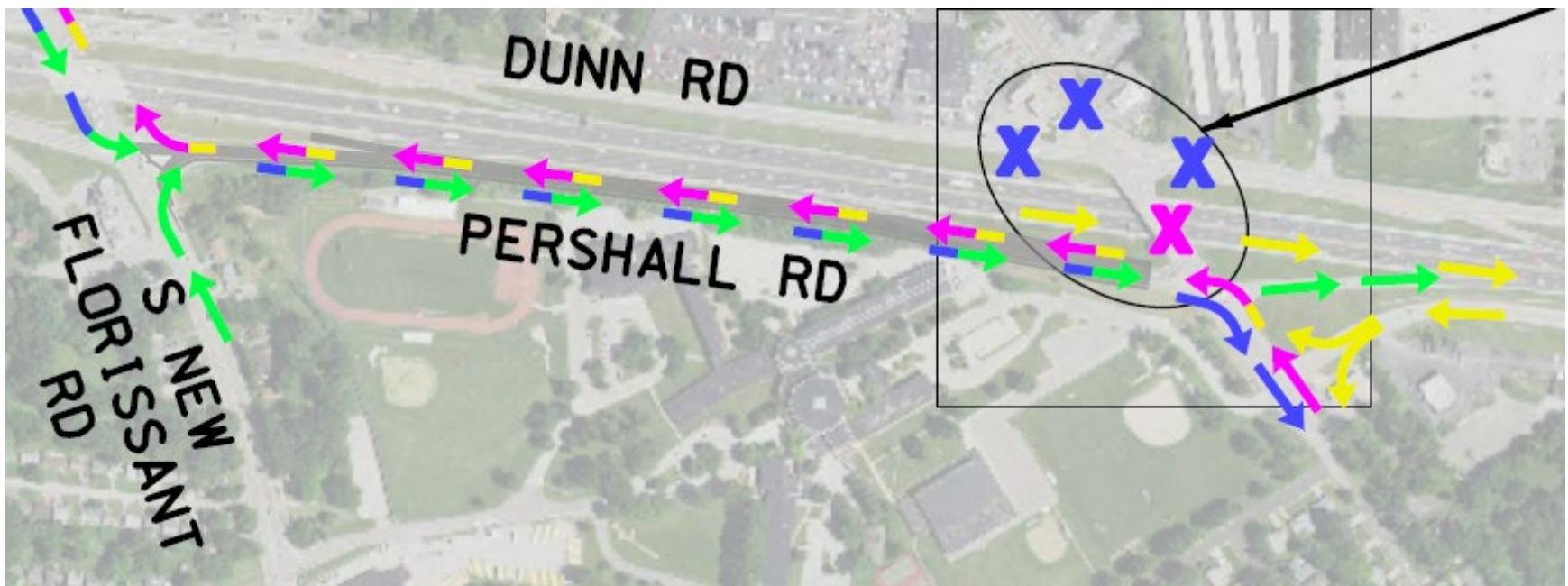
Approximate Closure
3 Weeks Nov 2020



Dunn and Washington Closure

Approximate Closure
3 Weeks - Nov 2020

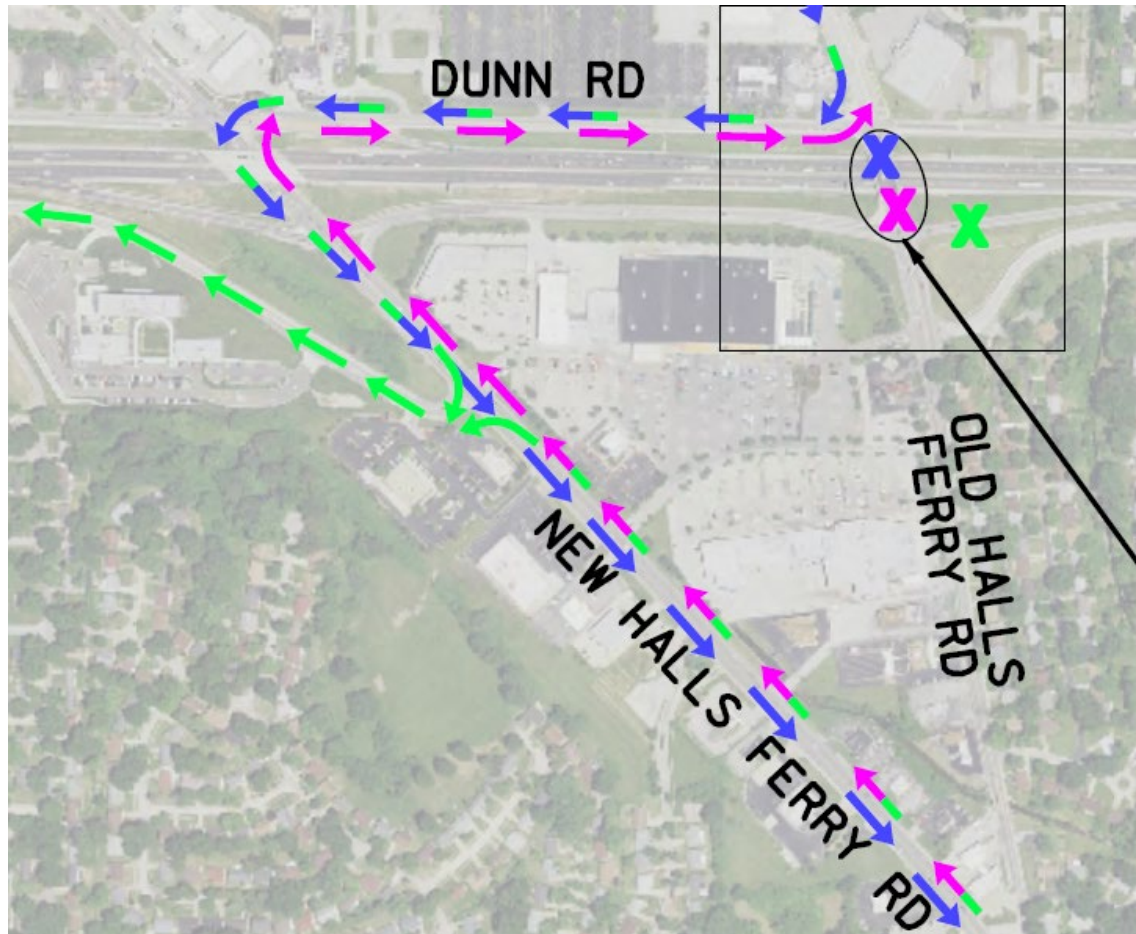
Washington St



Elizabeth Ave



Old Halls Ferry Closure



NB Lindbergh to WB I-270 Ramp Closure



Lindbergh Blvd



Video of Model

Model Fly-through Video



DBE & Workforce Diversity

Disadvantaged Businesses Enterprises Goals

18% for construction activities

22% for professional services activities

Workforce Diversity Goals

14.7% minority per craft

6.9% female per craft

On-the-Job Training (OJT) Requirement

8 positions at 1000 hours each

6 Construction Trades and 2 Professional Services

\$10 per hour incentive



Millstone Weber Communiversity

- Central source of education, information, and opportunity.
- Virtual community leadership and learning campus
- Fosters advancement of DBEs, workforce diversity, leadership development, STEM program immersion, and community outreach and involvement.



How You Can Get Involved

- Visit the website and subscribe for email updates at www.i270north.org
- Send an email to i270North@modot.mo.gov
- Invite MoDOT to present to your organization



Contact

Justin Wolf, P.E.

I-270 North Project Director

314-453-5057

Justin.Wolf@modot.mo.gov

Nina Thompson

I-270 North Communications Coordinator

314-370-4187

Nina.Thompson@modot.mo.gov

